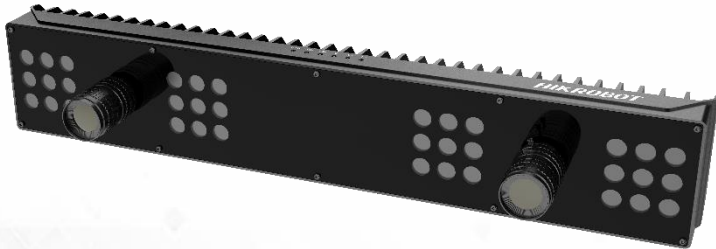


MV-IDX012M-16C-W

IDX Smart Code Reader



Introduction

MV-IDX012M-16C-W smart code reader consists of 2 image sensors of 12 MP. With built-in code reading algorithm, it can read different types of 1-dimensional and 2-dimensional barcodes. It has good robustness, and its max. reading speed is up to 90 codes/s.

Key Feature

- Adopts built-in code reading algorithm to read barcodes with good robustness.
- Adopts multiple IO interfaces for input and output signals.
- Supports RS-232 serial communication protocol.
- Supports indicators displaying device status.
- Adopts image sensors to acquire image data and provide high-quality image.

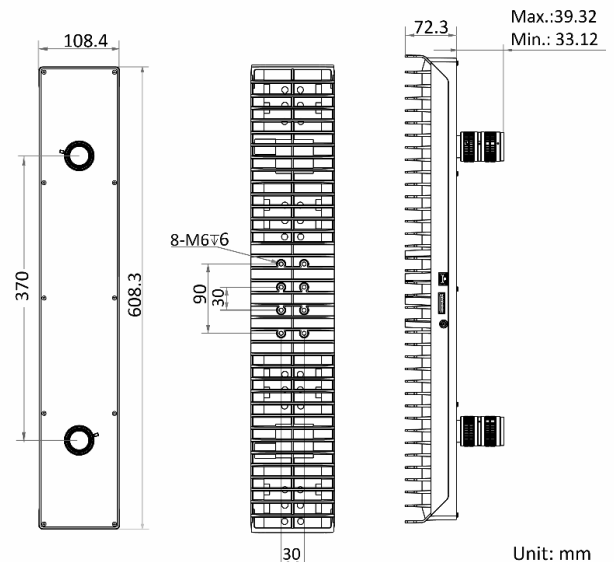
Available Model

MV-IDX012M-16C-W

Applicable Industry

Code-reading in logistics industry, factory automation, etc.

Dimension



Specification

Model	MV-IDX012M-16C-W
Performance	
Symbologies	1-dimensional codes: Code 39, Code 93, Code 128, ITF25, CodaBar, EAN 2-dimensional codes: QR Code, Data Matrix
Max. frame rate	10 fps
Max. reading speed	90 codes/sec
Focal length	16 mm
Optimal working distance	1650 mm
FOV	Upper FOV: 800 mm × 310 mm @10 mil Lower FOV: 1130 mm × 550 mm @10 mil
DOF	700 mm
Resolution*	3968 × 3000
Aperture	F2.8 to F16
Center illuminance	38000 lx@1 m
Uniformity	0.5
Luminous flux	14500 lm
Lighting wavelength	380 nm to 780 nm
Color temperature	6500 K
Communication protocol	SmartSDK, TCP Client, TCP Server, Serial, FTP, HTTP
Electrical features	
Data interface	Gigabit Ethernet
Digital IO	Green terminal provides I/O, including opto-isolated input (LineIn 0/1/2) × 3, opto-isolated output (LineOut 0/1) × 2, and RS-232 input × 1.
Power supply	48 VDC
Power consumption	< 150 W@48 VDC
Mechanical	
Dimension (without lens)	608.3 mm × 108.4 mm × 72.3 mm (24.0" × 4.3" × 2.8")
Weight (without lens)	Approx. 4 kg (8.8 lb.)
Ingress protection	IP40 (under proper installation of lens)
Temperature	Working temperature: 0 °C to 50 °C (32 °F to 122 °F) Storage temperature: -30 °C to 70 °C (-22 °F to 158 °F)
Humidity	20% to 80% RH, non-condensing
General	
Client software	IDMVS
Operating system	32/64-bit Windows XP/7/10

*Resolution here refers to the resolution of a single image sensor, and the smart code reader has 2 sensors.